

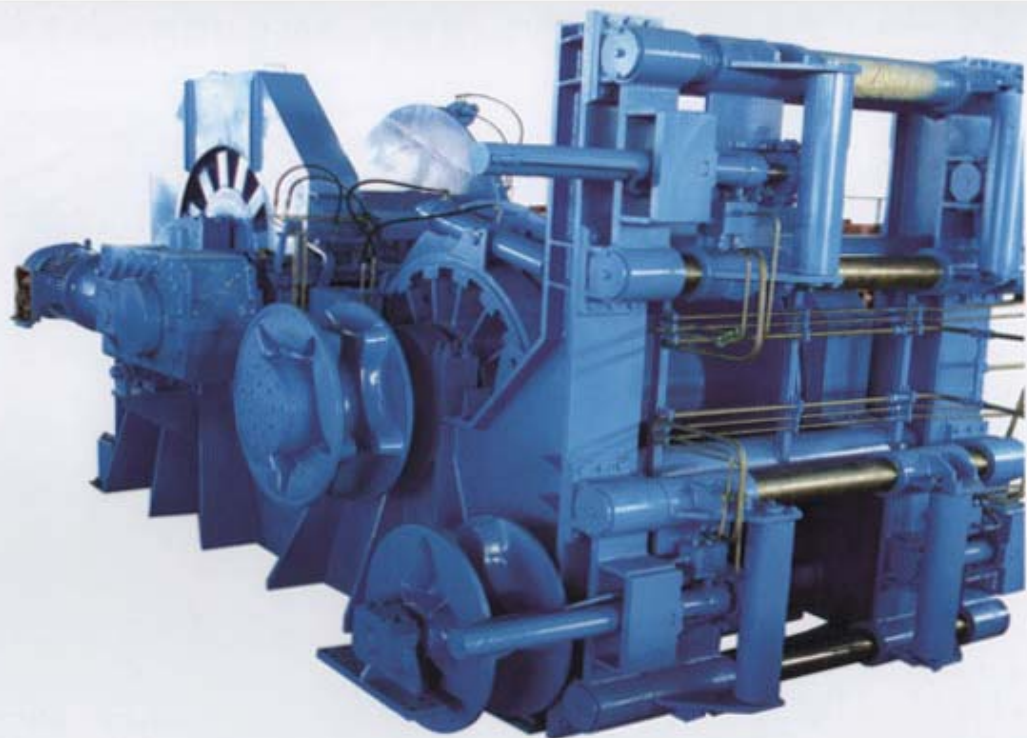
为新加坡裕廊船厂 (Jurong Shipyard), 制造的4台系泊绞车, 单绳拉力200吨, 速度0-8m/min, 单绳拉力300吨, 速度0-20m/min, 单卷筒, 电机驱动。产品经美国船级社 (ABS) 认证。

The company produces 4 mooring winches for Singapore Jurong Shipyard. The winches know the pull of single cord is 200T, the speed 0-8m/min and the pull of single cord 300T, the speed 0-20m/min. The winch of single drum is driven by electric motor and approved by ABS.



为新加坡吉宝船厂 (keppelsingmarine), 制造的双卷筒电动系泊绞车, 单绳拉力200T, 双卷筒, 液压驱动, 产品经俄罗斯船级社 (RS) 认证。

公司为SmitInternational船东, 制造的150吨系泊绞车2台, 第一层150吨拉力, 中间层92吨拉力, 最外层63吨拉力, 37吨系泊绞车2台, 第一层37吨拉力, 中间层22吨拉力, 最外层16吨拉力。产品经法国船级社 (BV) 认证。



The company produced double-drum electric mooring winch for Singapore Keppel Singmarine. The product is featured by single-cord pull of 200T and double drum and approved by Russia Shipyard.

Also, the company manufactures 150-T and 37-T mooring winch for Smit International shipyard. The former knows the pull of the first layer is 150T, the middle layer 92T and the outer 63T; the latter the pull of the first layer is 37T, the middle layer 22T and the outer 16T. The product is approved by French Ship bureau, BV.

根据ABS船级社规范要求，为瑞典COHSAFE公司SSCV半潜式起重平台设计制作1500KN系泊绞车，支承负载5000KN，采用船用变频电机驱动，系统采用PLC技术，对收、放缆，定位动作进行有效控制。

According to the regulation of ABS ship bureau, the company produced 1500KN mooring winch for SSCV (semi-underwater anchor platform) of Swede COHSAFE. The mooring winch loads 5000KN, is driven by ship frequency-changed motor and PLC, and controlled by position system.

